



**INFORMATION FOR RECOGNITION OF DISEASE-FREE STATUS FOR CATEGORY C DISEASES OF AQUATIC ANIMALS IN ACCORDANCE WITH CHAPTER 4 OF PART II OF [REGULATION \(EU\) 2020/689](#) AND ARTICLE 11 OF COMMISSION IMPLEMENTING [REGULATION \(EU\) 2020/2002](#)**

<b>Requirements and information</b>	<b>Information, explanation and justification</b>
<b>Identification of the programme</b>	
1. Date of submission	29 November 2021 Updated 3. December 2021 with point 11 b)
2. Name of Member State and details of contact point	Denmark  Danish Veterinary and Food Administration (DVFA), Stationsparken 31-33, 2600 Glostrup. Phone: +45 72276900. E-mail: <a href="mailto:14@fvst.dk">14@fvst.dk</a>
3. Name of Category C disease	IHN – Infectious Haematopoietic Necrosis
4. Identification of the grounds for recognition of disease-free status	Continued IHN free status of a historically free compartment under surveillance conducted in accordance with Annex VI, part II.  (d) Completion of an eradication programme
5. Territorial scope of the eradication programme	(b) Compartment  <u>Address:</u> Tingkærvej 7B Bindeballe 7183 Randbøl Denmark CHR: 108516  <u>Coordinates:</u> Latitude: 55.67 Longitude: 9.28

	<p><u>Farm details:</u>  Farm production: Grow out for human consumption  Water supply: Fount/drilling/drain  Discharge of effluents: Stream</p> <p><u>Farm productivity:</u>  Brood stock: newly established  For human consumption: newly established</p> <p><u>Description of compartment:</u>  The establishment is under construction (see map of compartment).  The compartment (when finished) will contain 4 buildings: 2 closed production facilities, a building for harvesting roe etc., and a building containing storage for feed, facility for change of clothes etc., nursery and hatchery. Furthermore, there is an open broodstock facility.</p>
<p><b>6. Dependency of compartments</b></p>	
<p>(a): Independent compartments as referred to in point (a) of Article 73(2) of Regulation (EU) 2020/689</p>	
<p>(i) The water is supplied through a water treatment plant which inactivates the relevant pathogen or that the water is supplied directly from a well, a borehole or a spring</p>	<p>The water is supplied from a spring area.</p>
<p>(ii) Where such water originates from a source outside the establishment, it is channelled directly to it by means which afford appropriate protection from infection</p>	<p>The water is channelled in a streamlet and runs directly to the compartment, where it is treated. At the inlet, the water enters a collecting tank which has a grid.</p>

<p>(iii) There are natural or artificial barriers that prevent aquatic animals from entering each establishment in the compartment from surrounding natural waters</p>	<p>Inlet: see (ii)  Outlet: The compartment is protected from aquatic animals by plant lagoons, sedimentation ponds and a grid at the outlet to Vejle stream. These barriers prevents aquatic animals entering the ponds from the stream.</p>
<p>(iv) Where appropriate, the establishments in the compartment are protected against flooding and infiltration of water from surrounding natural waters</p>	<p>The compartment has no risk of flooding due to it is located above the surrounding area. Flooding has not previously been observed.</p>

## 7. Statement

**Statement** confirming that the relevant general criteria in accordance with point (a) of Article 73(1) of that Regulation for aquatic compartments, are complied with since 1 April 2016 or longer

- (i) The territorial scope complies with point (c) of Article 47(2) of Regulation (EU) 2020/689;
- (ii) The surveillance for the disease complies with the requirements laid down in Articles 3(2), 4 and 6 to 9 of Regulation (EU) 2020/689, and Regulation 2017/625. Furthermore, Denmark has an executive order no. 1451 of 12/12/2019 according to Council Directive 2006/88/EC.
- (iii) Operators comply with obligations as regards biosecurity measures as laid down in Article 10 of Regulation (EU) 2016/429; and Danish executive order no. 965 of 18/07/2013.
- (iv) Operators comply with the disease control measures relevant to the disease in the event of a suspicion or confirmation. Delegated Regulation 2020/689 and Danish executive order no. 1451 of 12/12/2019 according to Council Directive 2006/88/EC.
- (v) The establishment of which the compartment is comprised of was approved for brood stock in September 2021. The establishment was approved according to Danish executive order no. 965 of 18/07/2013.
- (vi) Traceability of the animals from the targeted animal population is ensured;

	<p>(vii) When moved, the animals from the targeted animal population or products thereof complied with the animal health requirements for movement within the Union or for entry into the Union of those animals and products thereof, and Danish executive order no. 965 of 18/07/2013.</p>
--	--

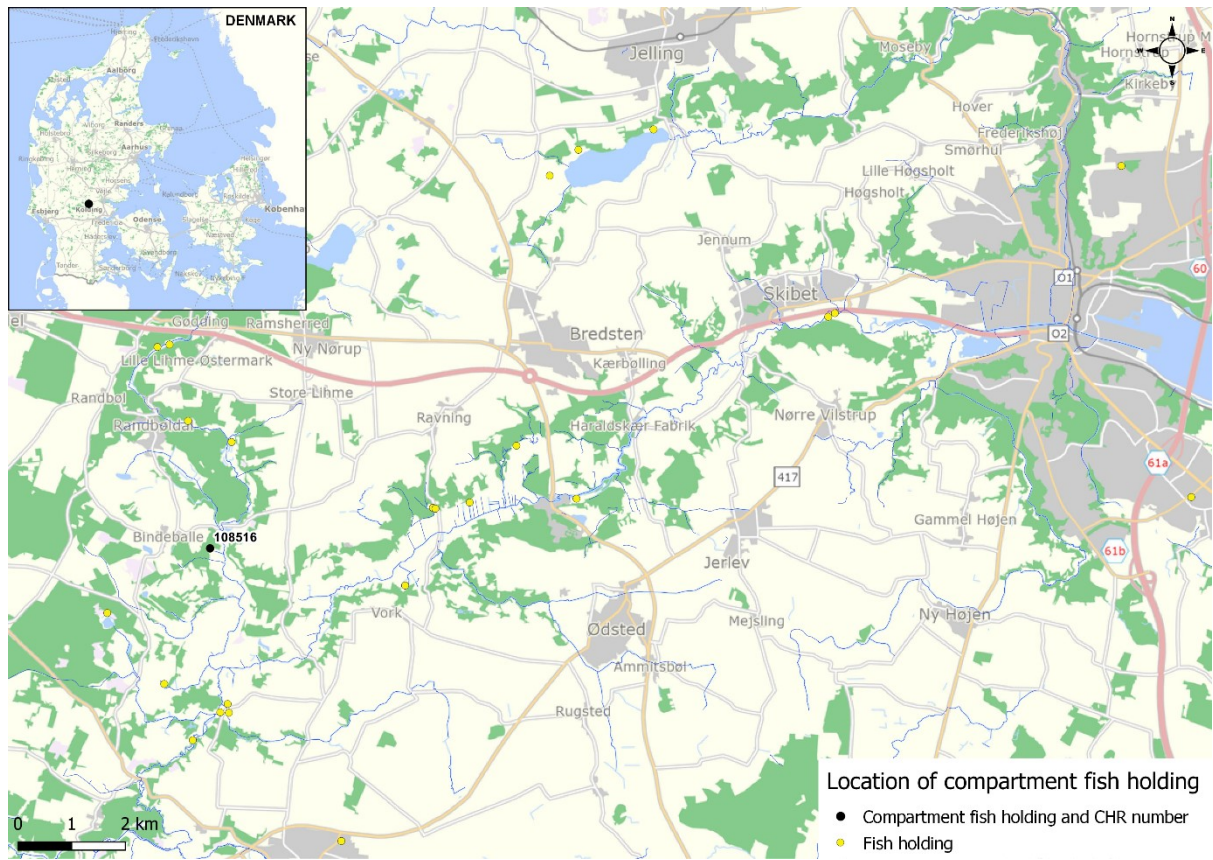
**11. When the grounds for recognition of disease-free status is based on the completion of an eradication programme, for each year of the programme, information must be supplied concerning:**

(a) the aquaculture establishments and where relevant, the sampling points in the wild in the zone/compartiment:

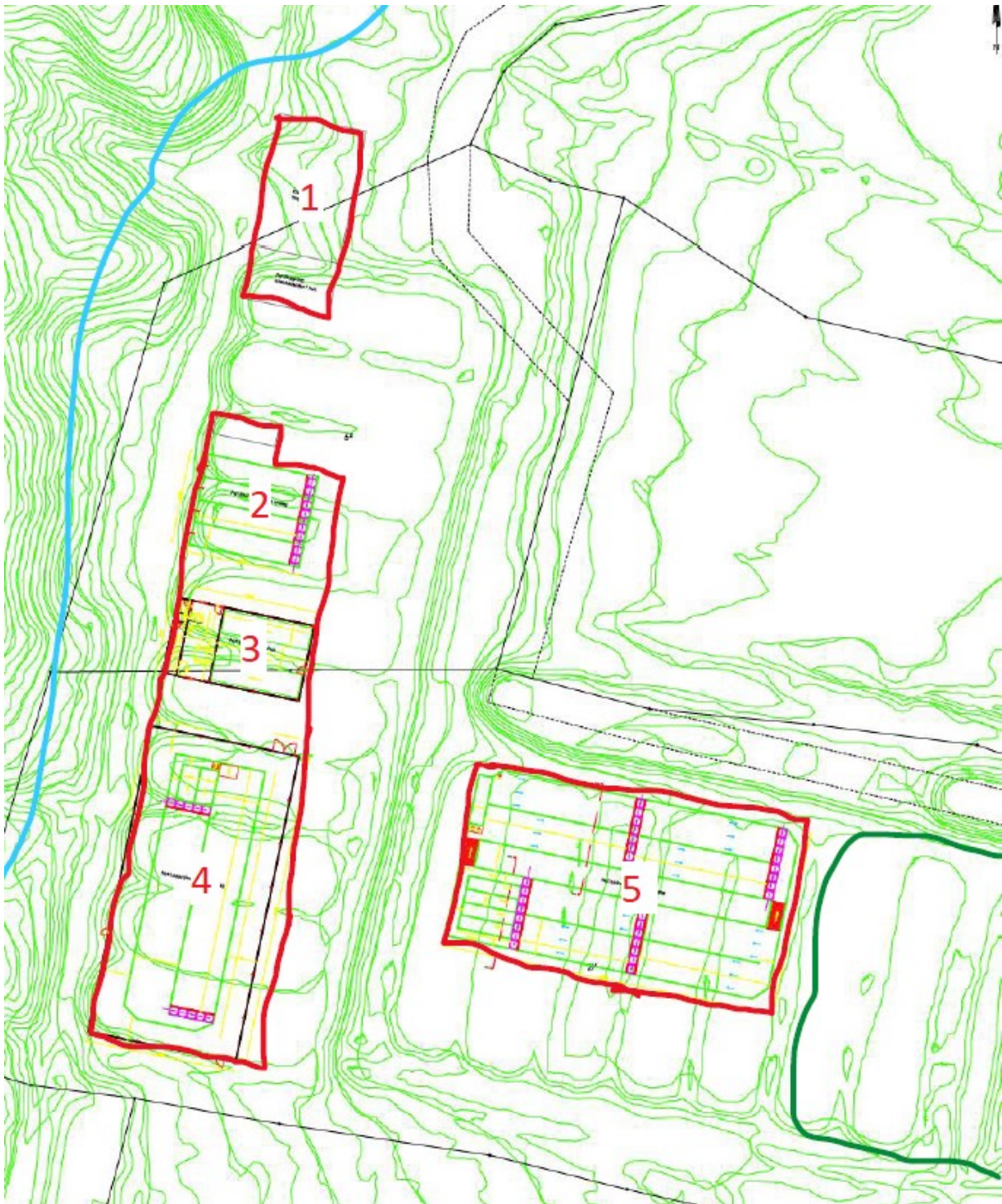
<p>(i) Number of approved aquaculture establishments in the programme</p>	<p>There is one approved aquaculture establishment in the compartment.</p>
<p>(ii) Maps showing approved and registered aquaculture establishments, and where relevant, sampling points in the wild</p>	<p>See map of compartment.</p>
<p>(iii) Number of aquaculture establishments, and where relevant, sampling points in the wild, out of the total number of aquaculture establishments and sampling points in the wild, which are not infected</p>	<p>One out of one aquaculture establishment in the compartment is not infected.</p>
<p>(iv) Number of aquaculture establishments, and where relevant, sampling points in the wild, out of the total number of aquaculture establishments and sampling points in the wild, with confirmed cases</p>	<p>The establishment has no confirmed cases.</p>

<p>(v) Number of new aquaculture establishments, and where relevant, sampling points in the wild, out of the total number of aquaculture establishments and sampling points in the wild, with confirmed cases</p>	<p>There are no new aquaculture establishments in the compartment with confirmed cases.</p>
<p>(b) animal health visits and sampling which have been completed</p>	
<p>(i) Number of health visits per approved and where relevant, per registered aquaculture establishment</p>	<p>The establishment was emptied due to sale in 2020. The new owner has renovated the facility. It has been fallowed from 1. October 2020 to 11. July 2021. Due to the fallowing there has been no fish for sampling in 2021. The establishment has received eggs in September 2021 from an establishment with same health status (same owner, Ravning Dambrug chr. 103668). Because the establishment now is up and running, it will be subject to health visits according to Delegated Regulation 2020/689, annex VI, part II, Chapter 1, section 4 and 5.</p>
<p>(ii) Number of samplings per approved, and where relevant, per registered aquaculture establishment, or samplings in wild populations</p>	
<p>(iii) Number of animals sampled at each sampling event</p>	
<p>(iv) Species sampled</p>	
<p>(v) Results from each laboratory examination (positive/ negative for the pathogen in question)</p>	
<p>(vi) Results from each clinical inspection</p>	
<p>(vii) Water temperature at the time of sampling</p>	

### Map of compartment and location in Denmark:





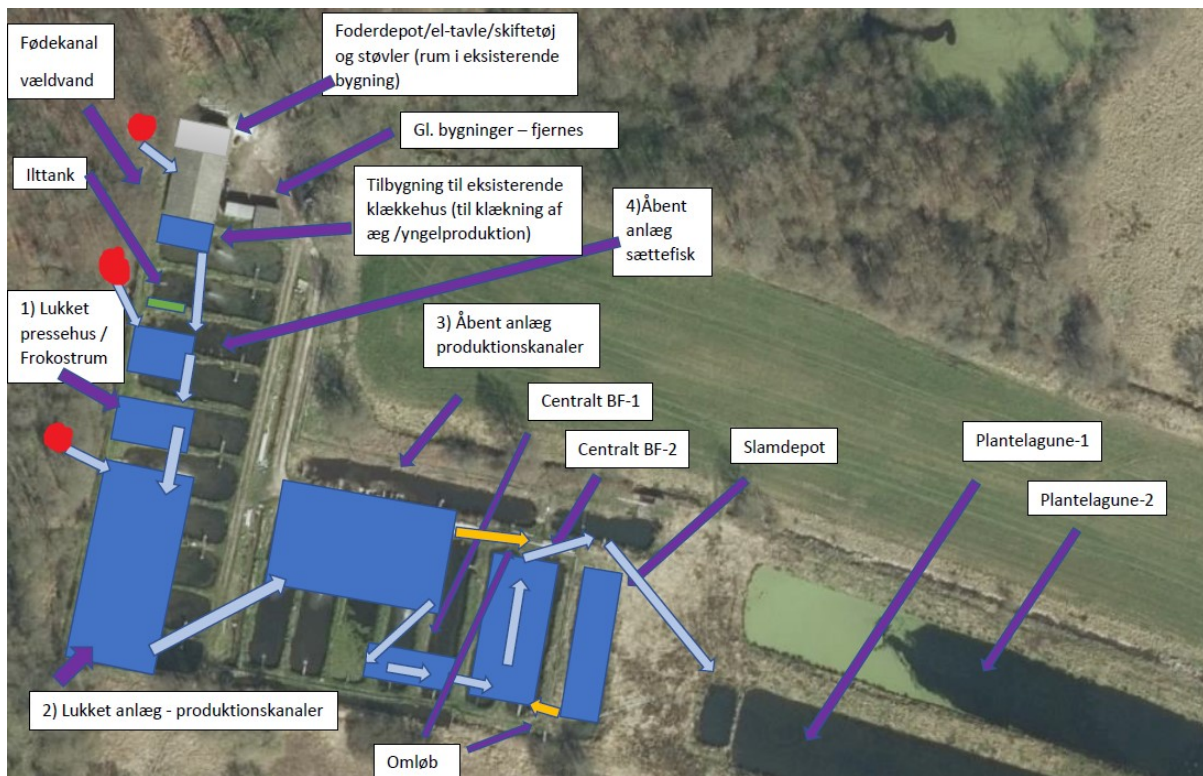


1. Existing building with new extended building
2. New open broodstock facility
3. New building for harvesting roe etc.
4. New closed production facility
5. New closed production facility

The red lines indicates the compartment.

The dark green line indicates the plant lagoons.

The blue line indicates the beginning of the spring area.



Red dots: Inlet

Fødekanal: Water inlet channel

Ilttank: Oxygen

Blue squares: New facilities

1) Lukket pressehus / frokostrum: Closed building for harvesting roe and crew's quarter

2) Lukket anlæg – produktionskanaler: Closed facility – production ponds

3) Åbent anlæg – produktionskanaler: Open facility – production ponds

4) Åbent anlæg – sættefisk: Open facility – stocking fish

Omløb: Bypass

Foderdepot/el-tavle/skiftetøj og støvler (rum i eksisterende bygning): Storage of feed/electrical panel/change of clothes and footwear (room in existing building)

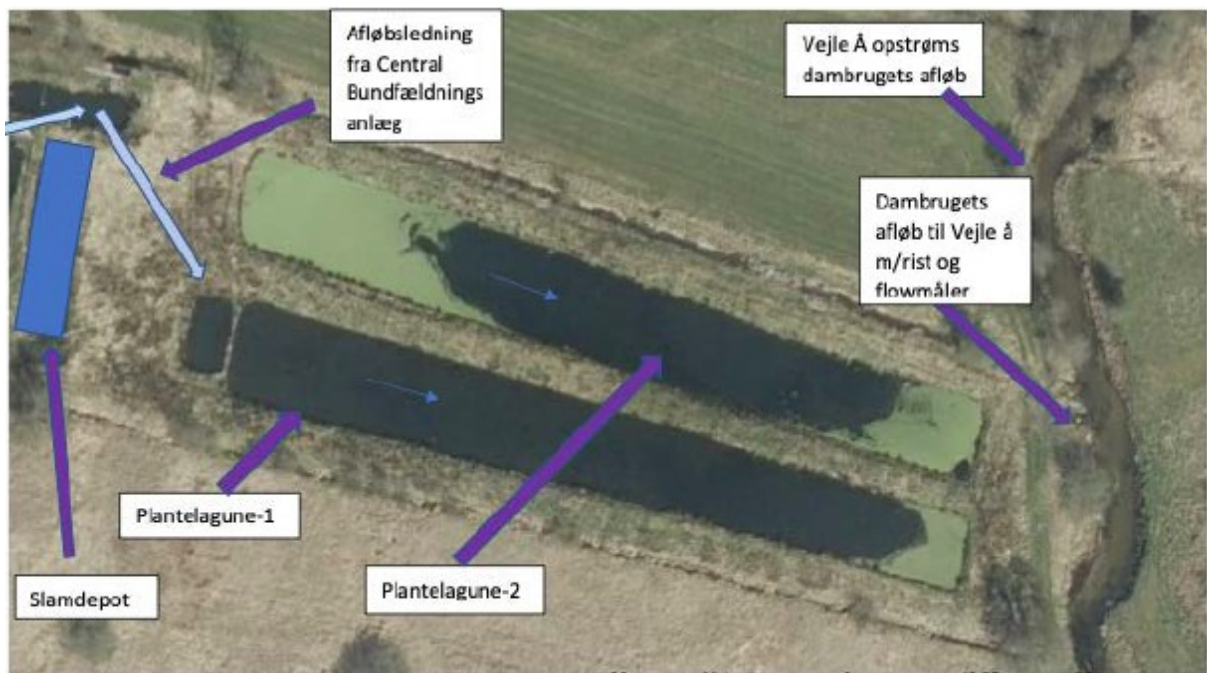
Gl bygninger – fjernes: Old buildings are/have been removed

Tilbygning til eksisterende klækkehus (til klækning af æg/yngelproduktion): Extension to existing hatchery (for hatching of egg/stocking fish production)

Centralt BF-1 and 2: Sedimentation ponds 1 and 2

Slamdepot: Sludge deposit

Plantelagune-1 and 2: Plant lagoons 1 and 2



Slamdepot: Sludge deposit

Afløbsledning fra Central Bundfældnings anlæg: Drainage pipe from sedimentation ponds

Plantelagune 1 and 2: Plant lagoons 1 and 2

Vejle Å opstrøms dambrugets afløb: Vejle stream up stream from the compartment outlet

Dambrugets afløb til Vejle Å m/rist og flowmåler: The compartment outlet to Vejle stream with grit and flowmeter.